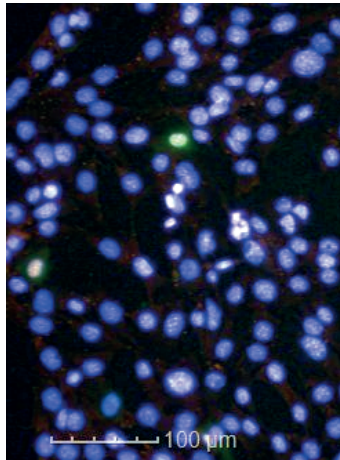


Input image

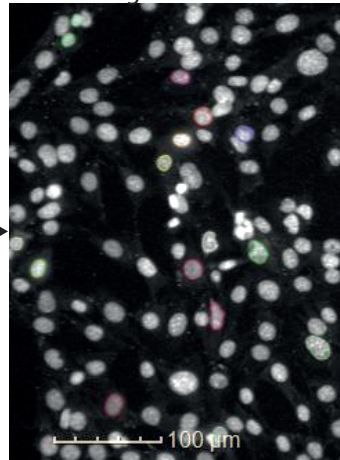
DAPI

GFP / GFP-Tet1-X

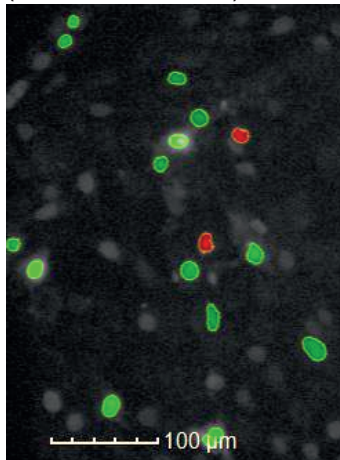
hmC



GFP-intensity based
nucleus segmentation



select and discard nuclei
according to morphology
(area and roundness)



- (1) sort nuclei by $\text{mean}(I_{\text{GFP}})$
- (2) ratio of $\text{sum}(I_{\text{hmC}})$ and $\text{sum}(I_{\text{DAPI}})$
- (3) average of (2) of $\text{mean}(I_{\text{GFP}}) < 50 \text{ AU}$
- (4) normalize (2) by division with (3)
- (5) Binning of $\text{mean}(I_{\text{GFP}})$ in
50-100 AU
< 500 AU
< 1000 AU